



viewTunes 1.0 Manual for Mac

viewTunes for Mac version 1.0

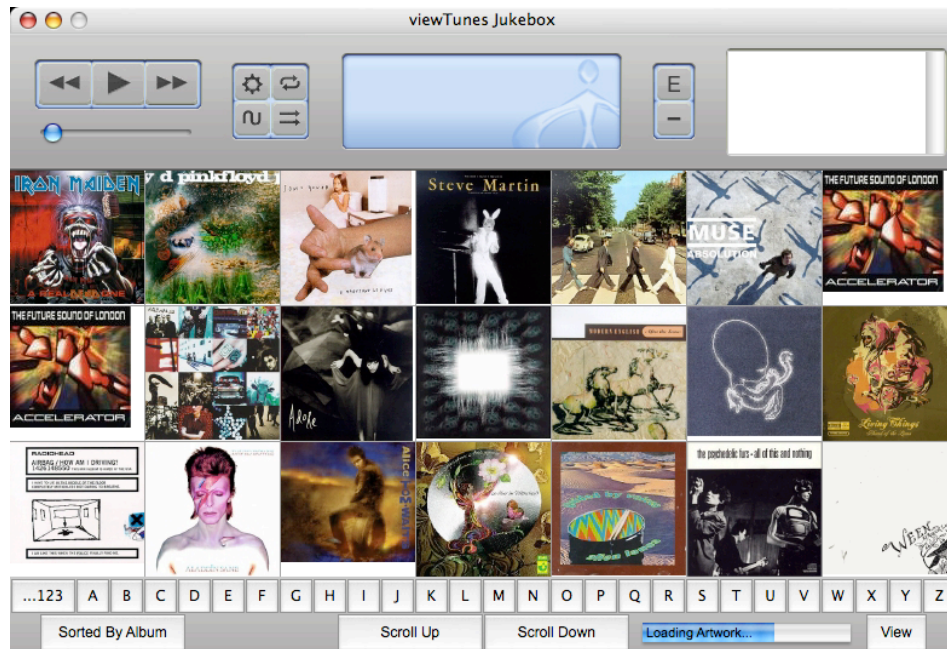
Questions and Support:
support@amphonicdesigns.com
www.viewtunes.com

Amphonic Designs
www.amphonicdesigns.com
1226 Love Street
Pittsburgh, PA 15218
USA

Page 3. Intro

- 3. Main Screen
- 6. Album Info Window
- 7. Edit Playlist Window

viewTunes offers a new way to enjoy your iTunes Music Library. viewTunes uses the iTunes Music Library.xml file to determine what music files are available. Any music imported to iTunes will be available to viewTunes. viewTunes is not meant as a replacement for iTunes. Instead it compliments iTunes ability to manage a great amount of information by offering a user interface that is focused on the music itself.



This is the Main Screen.

Top Panel Controls



Back, Play/Pause, and Next are the main buttons used for controlling your music.



The **Volume Slider** controls the volume of the music.



Opens the **Preferences Window**.



The **Repeat Button** cycles through Off, Repeat One, and Repeat All.



The **Tone Button** opens a window to adjust Bass, Treble, and Balance.



The **Shuffle Button** toggles Shuffle on and off.

Top Panel Controls Continued...



The **Main Display Screen** has a few features that can be used.

- Click on the album cover to open the Album Info Window for the album playing.
- Drag the Time Bar to fast forward or rewind the song.
- Click on the Time Clock on the right to toggle between Total Time and Time Remaining.



The **Playlist Button** opens the Edit Playlist Window.

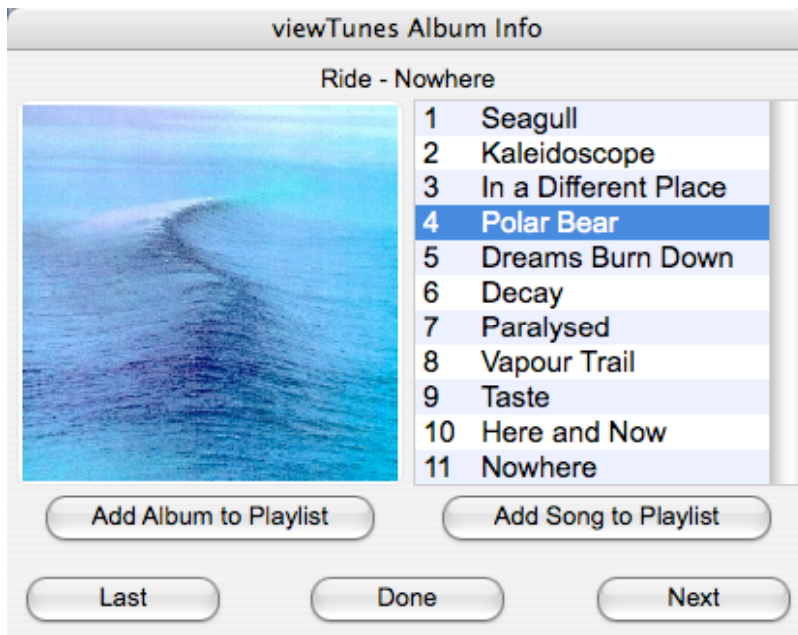


Remove Track Button removes the selected track from the playlist.



The **Playlist Box** has a few features that can be used.

- Double click a song to begin playing.
- Drag and Drop tracks to change the order of the playlist.



This is the Album Info Window.

To open this window, click on an album cover in the Album Library.

Add Album to Playlist adds the entire album to the current playlist.

Add Song to Playlist adds the selected song to the current playlist.

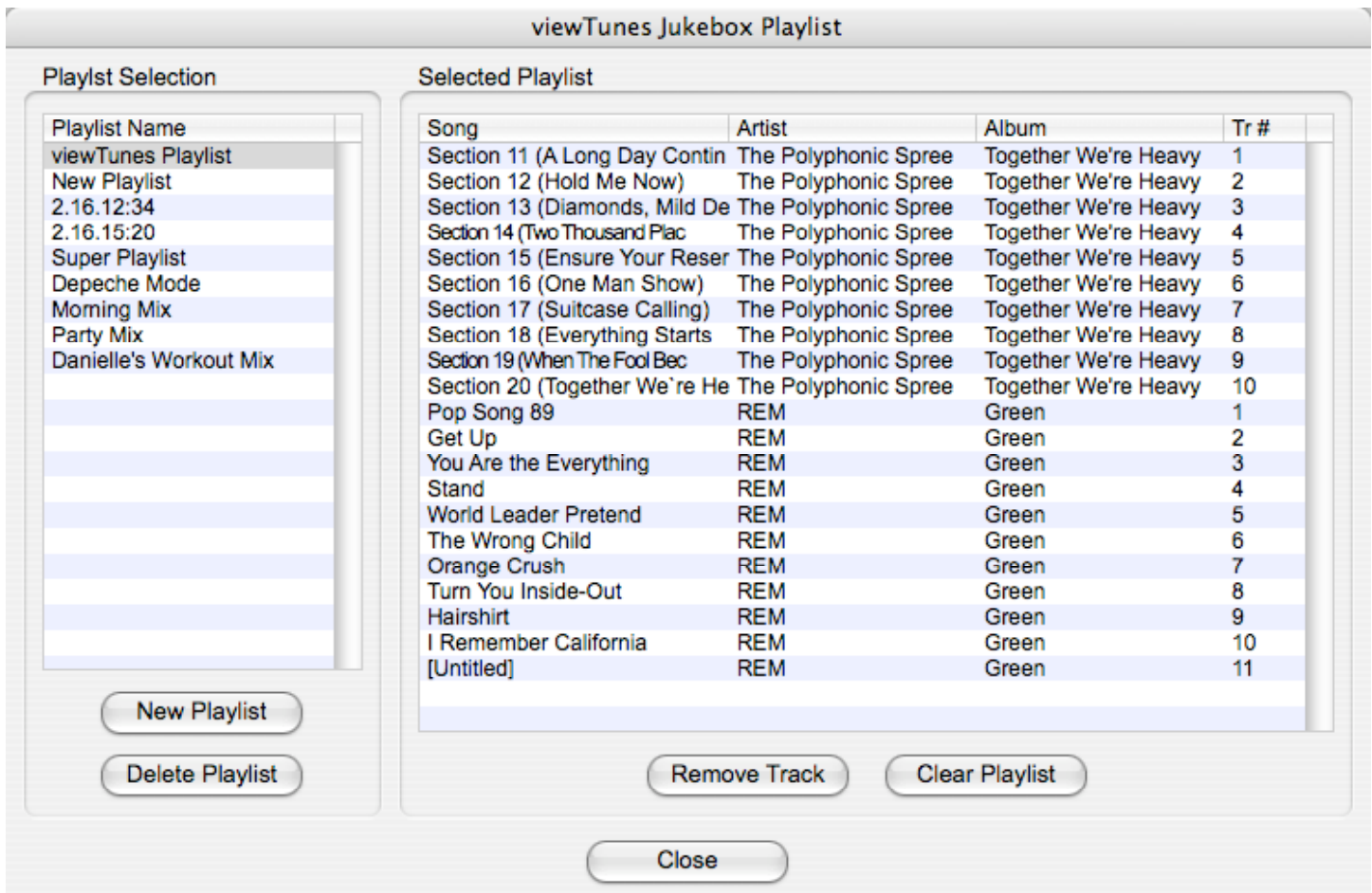
Double Click on a song to add it to the current playlist.

Use the **mouse scroll wheel** on the album cover to scroll through the music library.

The **Last Button** shows the album info for the album before the selected album in the music library.

The **Next Button** shows the album info for the album after the selected album in the music library.

The **Done Button** closes the Album Info Window.



The Edit Playlist Window

Playlist Selection

Click on a Playlist name to change the name of the selected playlist.

New Playlist Button adds a new playlist to viewTunes.

Delete Playlist Button removes a playlist from viewTunes.

Selected Playlist

Drag and Drop tracks to change the order of the playlist.

Remove Track Button deletes the selected track.

Clear Playlist Button deletes all the tracks in the playlist.

Close Button closes the Edit Playlist Window.